

EASTERN GARDENS CALENDAR OF EVENTS

SEPTEMBER 2012

SUN	MON	TUE	WED	THUR	FRI	SAT
						1
2	3 LABOR DAY 8:15am - Tai Chi	4	5 8:15am - Tai Chi	6 10am Coffee	7 8:15am - Tai Chi	8
9	10 8:15am - Tai Chi	11	12 8:15am - Tai Chi	13 10am Coffee	14 8:15am - Tai Chi	15
16	17 8:15am - Tai Chi	18  6:30pm Movie Nite	19 8:15am - Tai Chi	20 10am Coffee	21 8:15am - Tai Chi	22
23	24 8:15am - Tai Chi	25  10am Bookmobile	26 8:15am - Tai Chi	27 10am Coffee 7pm Board Mtg	28 8:15am - Tai Chi	29  Give-A-Way
30						

OCTOBER 2012

SUN	MON	TUE	WED	THUR	FRI	SAT
	1	2	3 8:15am - Tai Chi	4 10am Coffee	5 8:15am - Tai Chi	6
7	8 8:15am - Tai Chi	9  6:30pm Movie Nite	10 8:15am - Tai Chi	11 10am Coffee	12 8:15am - Tai Chi	13
14	15 8:15am - Tai Chi	16	17 8:15am - Tai Chi	18 10am Coffee	19 8:15am - Tai Chi	20
21	22 8:15am - Tai Chi	23  10am Bookmobile	24 8:15am Tai Chi	25 10am Coffee	26 8:15am - Tai Chi	27
28	29 8:15am - Tai Chi	30	31 Halloween  8:15am Tai Chi			

AN EMERGENCY IS A PERSONAL SITUATION THAT THREATENS HUMAN LIFE OR PERSONAL PROPERTY AND DEMANDS IMMEDIATE ATTENTION, I.E. MEDICAL, BURGLARY, FIRE, THEFT & ASSAULT — **DIAL 911**

THE GARDENS GRAPEVINE

Volume 9—Issue 5

EASTERN GARDENS COOPERATIVE, INC.
3045 EASTERN AVE. SACRAMENTO, CA 95821

SEPT-OCT 2012

THINKING SAFETY FIRST

2012 BOARD OF DIRECTORS

- Kathy Slotterback**
President/Board Member
- Diane McKee**
V.P./Board Member
- Chris Manning**
Treasurer/Board Member
- Ed Healy**
Secretary/Board Member
- Shirley Brown**
Board Member
- Lynette Haley**
Alternate Board Member
- Vacant**
Alternate

MANAGING AGENT

FPI Management
800 Iron Point Road
Folsom, CA 95630
(916) 357-5300

- Gary Haugstad**,
Sr. Portfolio Mgr.
- Theresa Williams**
Mgr./Community Director
- Kurt Whisenhunt**
Maintenance, (On Call/PT)

OFFICE HOURS

8am—5pm
Sat-Sun: CLOSED
Office Ph: (916) 489-1604
www.easterngardenscoop.org

After Hour Building Emergencies
(916) 271-8649



You've often heard or read articles, or seen signs how we all need to exercise good safety practices a thousand times now. Whether at home, work, driving your vehicle or just out-and-about having fun. According to the dictionary, "safety" is: *"The condition of being safe from undergoing or causing hurt, injury, or loss"*. There are many interpretations of the word "safety" that depend on the context of where it is actually used.

Safety is a way of life—meaning that it is not something one should have to stop and think about, but should be as familiar and about as automatic as breathing. Of course, breathing comes naturally from day one, but safety only becomes automatic as we gradually absorb the lessons learned from parents, teachers, books, and our own trial-and-error experiences.

Most of us have by this time reached the point where certain habits of safety are ingrained—such as looking in all directions before crossing at a busy intersection. But to ensure the security that comes from making safety a way of life, we have to pay the price—which is cheap, compared to the dividends.

The price? It's the same as "how to get to Carnegie Hall," namely, practice, practice, and more practice. This means that until we have made safety a part of everything we do in our lives, we need to force ourselves to think how to do it in such a way that neither we nor anyone else will suffer

harm as a result. This can be done. After all, consider the hazardous jobs many men and women work at every day without harm.

Here at Eastern Gardens, however, we all need to be on the same team. It is important that we understand that we all share common wall space, breezeways and buildings and must think safety, but we don't do it by taking chances with our own safety and that of others who are our neighbors. Instead, we continue to *think about safety* whenever and whatever we're doing. A few but simple safety reminders that are not only unsafe

- but illegal:
- Do not store flammable liquids, hazardous or toxic chemicals inside your apartment unit, this will include but not limited to, machinery or combustible engines that run on gasoline...etc.
 - Do not leave candles burning when not at home.
 - Do not bring glassware inside the pool area. This will include but not limited to, thermometers, dishes, glass bottles...etc.
 - Each member is responsible for keeping their parking spaces free of excess oil and grease. Slips and injuries of this nature resulting from a member's negligence of non-compliance will be held financially responsible for the person's injuries and any related cost increases to EG's insurance.

If this hasn't already become automatic behavior, then you may need more practice than others. At any rate, once we have all paid the necessary price of practicing safety, we will all begin to share the dividends. Think Safe—Be Safe

THINK
SAFETY STARTS
WITH YOU

2013 BUDGET

On August 23, 2012 the Board of Directors held its annual Budget Review for year 2013. Mr. Gary Haugstad, FPI Portfolio Manager outlined EG's projected income and expenses for year 2013. After the presentation and answering questions to certain line items

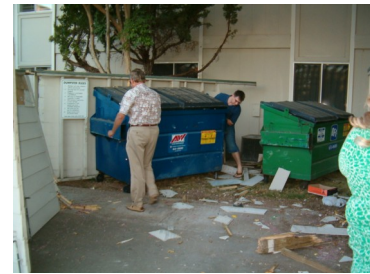
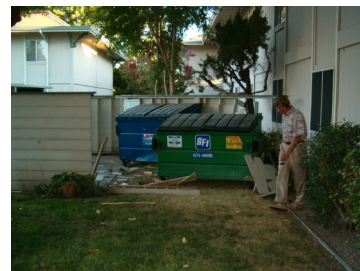


within the budget. Mr. Haugstad recommended to the Board that the budget for 2013 be accepted with NO carrying charge increases for the year 2013. The Board unanimously approved, 5 - 0 approving the budget for 2013 with no carrying charge increases. Management will forward the 2013 budget onto HUD for their final review and approval. Once approved by HUD the budget will be made available to the general membership.

The Board would like to thank its managing agent, Mr. Gary Haugstad, Portfolio Manager and Theresa Williams, Community Director, for their continued support and guidance for maintaining a balanced budget on our expenditures and their coordination efforts with HUD, our insurance company, vendors and contractors.

It Wasn't Thunder

There was a big bang and what sounded to be like a roar of thunder wasn't thunder at all but instead a vehicle crashing through the dumpsters. A week ago last Thursday one of our members accidentally crashed into the dumpster area located at building 3015/3017. With only damages to the surrounding enclosures of the dumpster area, we are happily to report that there were no injuries or building damages, that is, excluding the embarrassment of the member and that of their insurance company. Rest assure your management/maintenance staff are experienced at this sort of thing. Aside from a car go-



ing into the pool, the clubhouse, the front gate, an apartment building (twice) and now the dumpster area, the EG staff is on top of this one. Repairs will begin shortly and as a pre-

cautionary measure, instead of the usual wooden posts, maintenance will be installing steel I-beam support posts to help reinforce the structure. This was done at other locations as well as the installation of round steel bollards filled with concrete. Finally, the member involved in the accident apologizes for the incident and wishes to thank those who were very helpful and concerned and is relieved that there were no injuries, that is, other than his wallet.

Don't Dump Drugs Down Drains

Studies show the typical adult uses nine personal-care products a day. These products, ranging from shampoo to sunscreen to over-the-counter medications, contain compounds that can find their way into rivers, streams and other water supply sources. These substances, known collectively as pharmaceuticals and personal-care products (PPCPs), enter the environment through the wastewater stream and likely have been present in water supply sources for as long as such products have been in use. Some medications are not entirely absorbed in our bodies, leaving the excess to enter the wastewater stream. In addition, some people dispose of prescription drugs by flushing them down the toilet. Most wastewater treatment plants are not designed to remove these substances. Since controlling what goes down the drain is the easiest and most cost-effective way to protect water supply sources, Sacramento Suburban Water District (SSWD) encourages its customers to dispose of pharmaceuticals and other products responsibly. That means keeping them out of sinks and toilets.



Safety Alert



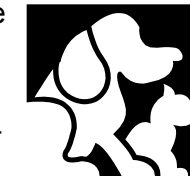
Energy Saving Bulbs (CFL's) have been in existence for a long time now. As the name indicates, these bulbs are more effective as compared to an ordinary incandescent bulbs. Most of us are currently using these bulbs in order to save on electricity consumption. However, these types of bulbs, if broken, can cause serious danger. If one breaks:

- Evacuate the room, taking care not to step on the shards of glass littering the floor.
- Do not use a vacuum cleaner to clean up the mess as the machines sucking action could spread toxic mercury droplets around the house.

- Put on Rubber gloves and sweep the debris onto a dustpan.
- Place the remains in a plastic bag and seal it.
- Do not put the plastic in a normal household trash.
- Try not to inhale dust from the broken bulb.

Get Current – Reduced Licensing Late Fee through September

It's the perfect time to get your pet's license current. Now, through September 30, the \$100 licensing late fee has been reduced to \$15! The pet licensing benefits are great – including immediate contact and return of a lost pet; coordination with vet for lost injured pets; free or low cost final arrangement services; and funds help support the shelter animals.



Give-A-Way Take-A-Way



Bring your unwanted stuff, but in good condition. This

is an opportunity for you to give away/take away those belongings that you've stuffed or packed away and never use.

The event date and times is as follows:

- Where: Clubhouse
- Day: Saturday
- Date: September 29, 2012
- Time: 8am-11am

Note: Drop-off time for your belongings is Friday, Sept 28th at 12pm noon.

Next Give-A-Way/Take-A-Way

- December 22, 2012

Movie Night

All movies will be on the 2nd Tuesday of each month unless otherwise noted. Details are posted inside the laundry rooms. Fifty (50) cents donation includes movie, punch and popcorn. Where: Clubhouse @6:30pm When & What:



Tuesday Sept 18th

"The Iron Lady". An elderly Margaret Thatcher talks to the imagined presence of her recently de-

ceased husband as she struggles to come to terms with his death while scenes from her past life, from childhood to British Prime Minister intervene! Starring: Meryl Streep, Jim Broadbent & Harry Lloyd. Drama

Tuesday, October 9th

"Goodbye Mr. Chips". London: Circa 1920's to 1960's: The story is of love and devotion. Peter O'Toole is magnificent as

a reserved school master who is dedicated to teaching young boys. He meets a showgirl and falls in love. Petula Clark adds spirit and sensitivity not to mention a remarkable voice. Starring: Peter O'Toole,

Petula Clark & Michael Redgrave. A family comedy

NOTE: Movie Nite will be on the 3rd Tuesday for the month of September. POC: Kathy Kent @482-1533

New Contact



The new after hour building emergency phone number is:

(916) 271- 8649